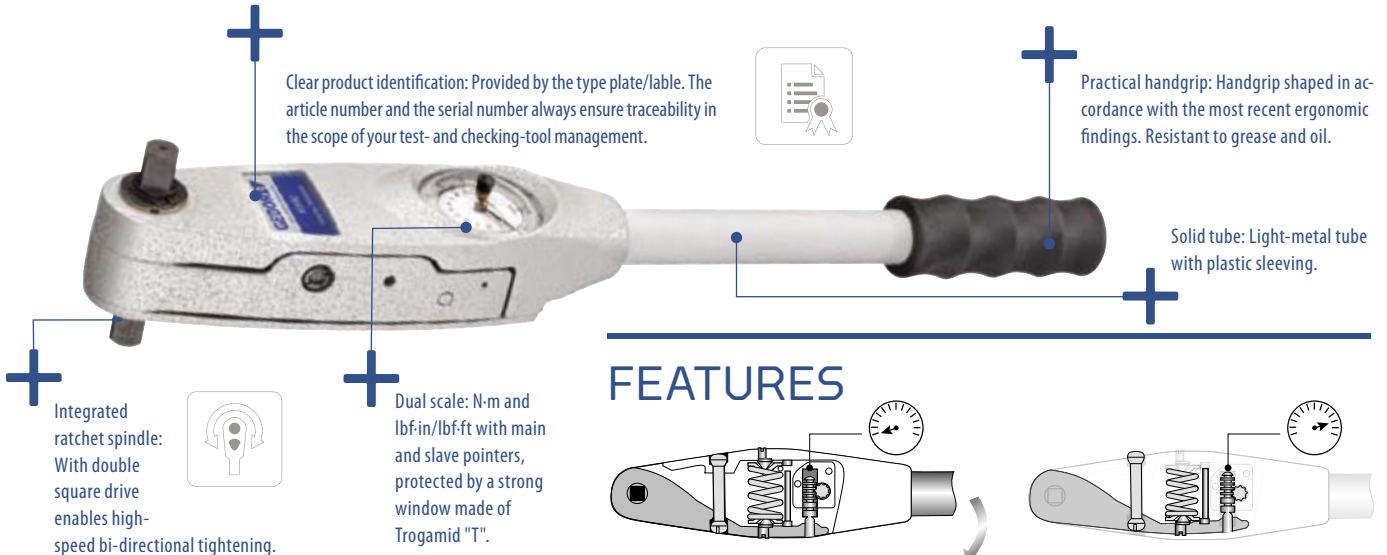
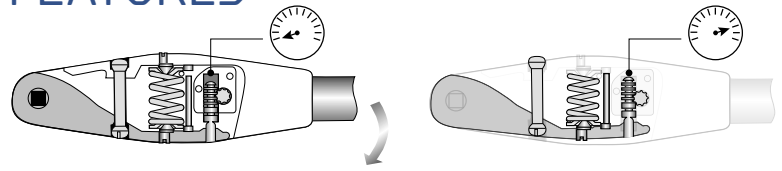


## Torque wrench Type 83

# TORQUE WRENCHES WITH SLAVE POINTER IDEAL FOR TEST, CONTROL AND MAINTENANCE WORK



## FEATURES



The working principle of the torque wrench with slave pointer type 83

## 8301 - 8305

# TORQUE WRENCH WITH SLAVE POINTER TYPE 83

0.8-2000 N·m / 7 lbf·in - 1500 lbf·ft

±4%  
○○○○○○○○



**Use:**

- > Controlled tightening and verification of tightening values
- > For use in all areas of industrial manufacturing and in quality control
- > Working ranges of 0.8 to 2000 N-m are covered

**Features:**

- > Dial-indicating torque wrench with dual scale and slave pointer
- > 1/4", 3/8", 1/2", 3/4" or 1" double-square drive with ball locking device for controlled bi-directional tightening
- > Models 8301-04 to 8304-80: With integrated ratchet-function
- > For controlled screw tightening and torque measurements
- > Working accuracy: +/- 4 % tolerance of the indicated torque
- > Acc. to DIN EN ISO 6789, traceable to national standards
- > With dual scale in N-m and lbf-in or lbf-ft double-tinted clearly readable face
- > Integrated overload protection - mechanical stop up to max. 25 % overload of the maximum value
- > Housing made of lightweight, robust special aluminium construction - lacquered, silver-grey
- > Black, non-slip rubber handgrips
- > **Models 8301-04 to 8301-40: EPA-conformant (Electrostatic Protected Area), for use in sensitive electrostatic applications**
- > Audio-visual signal is standard on models 8303-40 to 8305-20

**Scope of delivery:**

- > Dial-measuring torque wrench type 83
- > Battery (models 8303-40 to 8305-20)
- > Test certificate acc. to DIN EN ISO 6789
- > Delivered in a sturdy black plastic box (no. 8301-04 to 8302-20), otherwise in sturdy cardboard packaging (no. 8303-40 to 8305-20)



| Type | █"  | █    | N-m      | lbf-in | lbf-ft   | EPA | ↳ mm ↳ | ▬▬▬▬▬▬             | Height | ⚖    | Code    | No.     |
|------|-----|------|----------|--------|----------|-----|--------|--------------------|--------|------|---------|---------|
| ☞    | 1/4 | 6,3  | 0,8-4    | 7-35   |          | x   | 244    | 0,1 N-m / 1 lbf-in | 61     | 0,5  | 7651390 | 8301-04 |
| ☞    | 1/4 | 6,3  | 2,4-12   | 22-120 |          | x   | 244    | 0,5 N-m / 2 lbf-in | 61     | 0,5  | 7651470 | 8301-12 |
| ☞    | 3/8 | 10,0 | 5-25     | 44-240 |          | x   | 244    | 1 N-m / 10 lbf-in  | 69     | 0,5  | 7651550 | 8301-25 |
| ☞    | 3/8 | 10,0 | 8-40     | 72-360 |          | x   | 244    | 1 N-m / 10 lbf-in  | 69     | 0,5  | 7651630 | 8301-40 |
| ☞    | 1/2 | 12,5 | 16-80    |        | 12-60    |     | 435    | 2 N-m / 1 lbf-ft   | 86     | 1,4  | 7651710 | 8302-08 |
| ☞    | 1/2 | 12,5 | 40-200   |        | 30-160   |     | 515    | 5 N-m / 5 lbf-ft   | 86     | 1,4  | 7651980 | 8302-20 |
| ☞    | 3/4 | 20,0 | 80-400   |        | 60-300   |     | 710    | 10 N-m / 10 lbf-ft | 111    | 3,2  | 7652280 | 8303-40 |
| ☞    | 3/4 | 20,0 | 160-800  |        | 120-600  |     | 1000   | 20 N-m / 20 lbf-ft | 123    | 4,8  | 7652010 | 8304-80 |
| ☞    | 1   | 25,0 | 280-1400 |        | 200-1000 |     | 2040   | 25 N-m / 25 lbf-ft | 138    | 16,7 | 1196790 | 8305-14 |
| ☞    | 1   | 25,0 | 400-2000 |        | 300-1500 |     | 2040   | 50 N-m / 50 lbf-ft | 138    | 16,7 | 1196804 | 8305-20 |